



CONDOS LOCATIFS





Sommaire

- Perspectives
- Unités
- Plan d'étages
- Plans d'unité par type

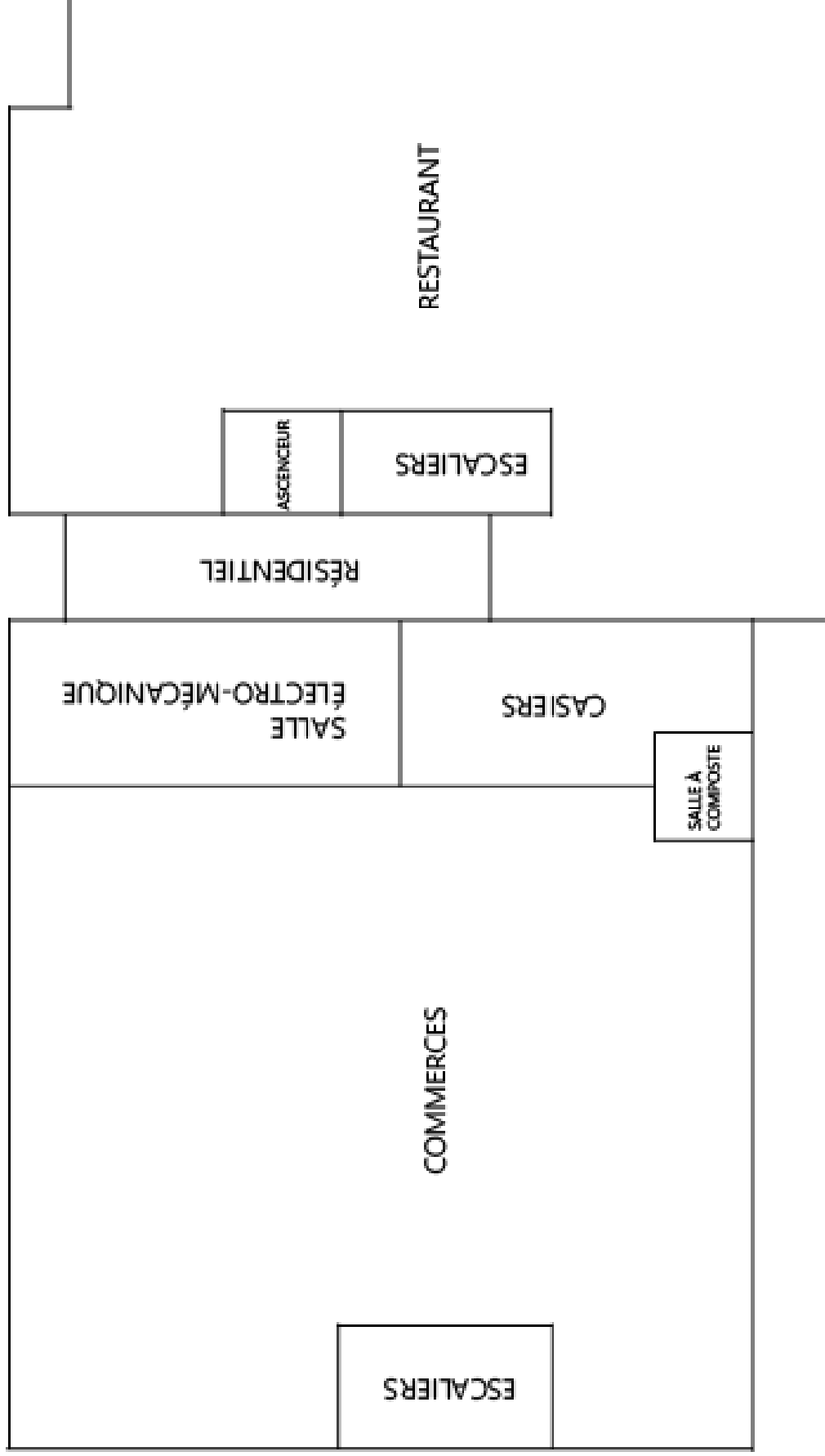
Perspectives



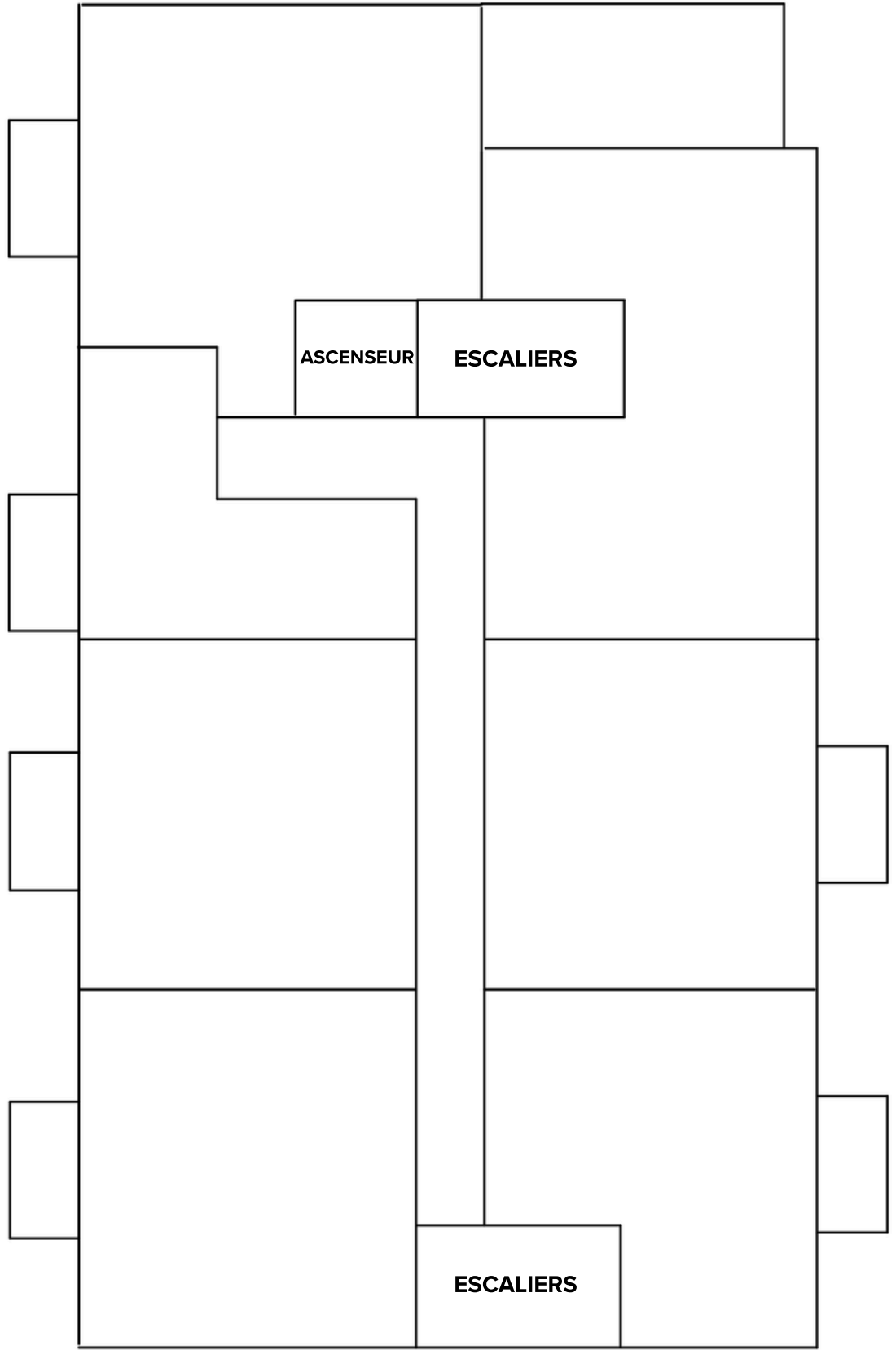
Unités



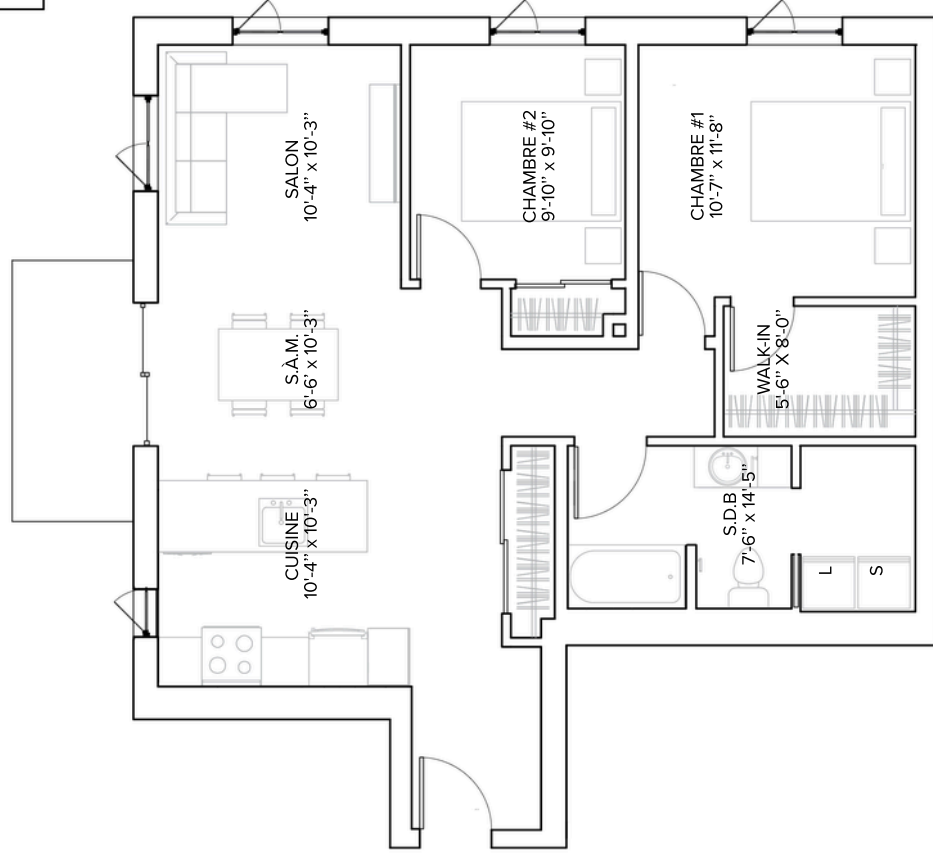
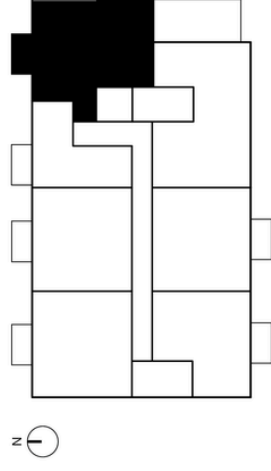
Plan étage 1



Plan étage 2-3



Plan d'unité - Type 1



Unité(s)

201

301

Chambre(s)

2

Salle(s) de bain

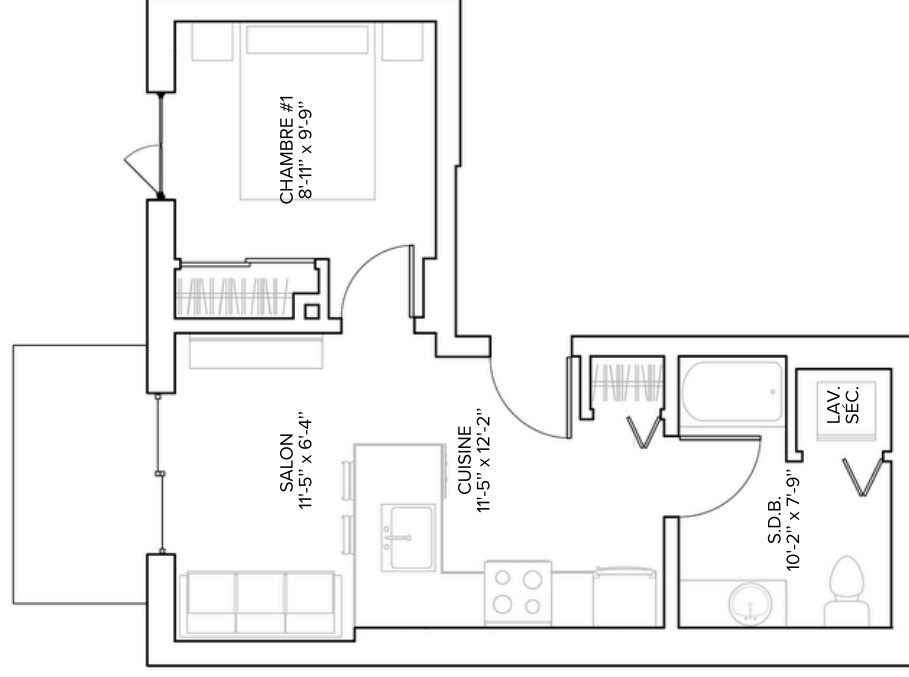
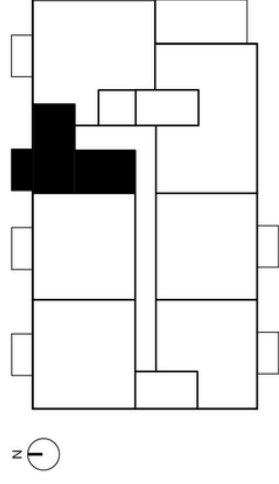
1

Superficie

950 pi²



Plan d'unité - Type 2



Unité(s)

202

302

Chambre(s)

1

Salle(s) de bain

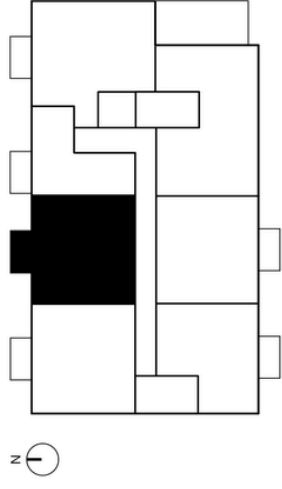
1

Superficie

455 pi²



Plan d'unité - Type 3



Unité(s)

203

303

Chambre(s)

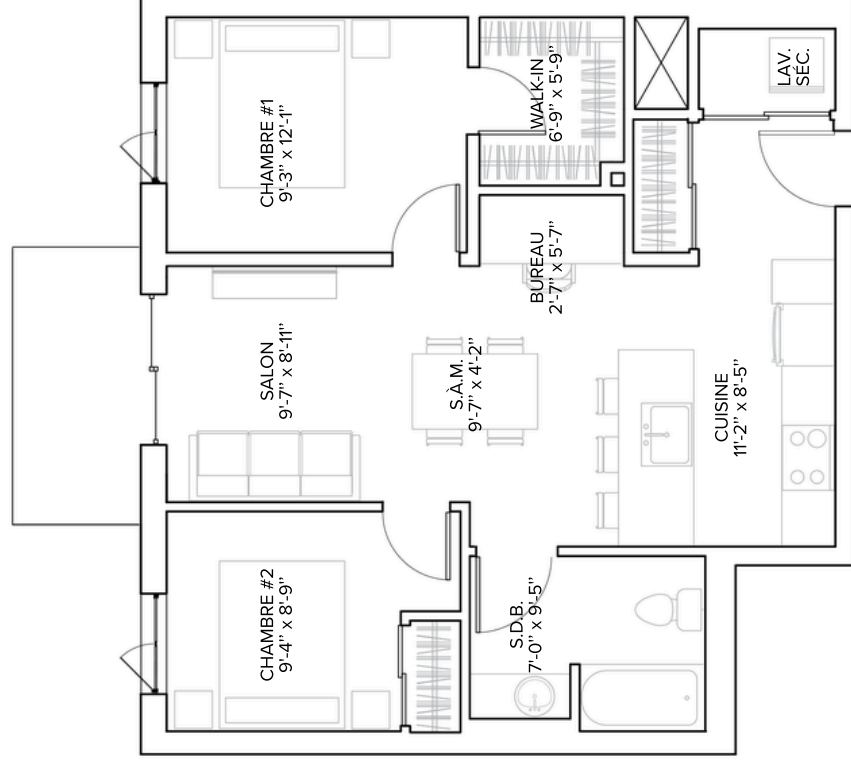
2

Salle(s) de bain

1

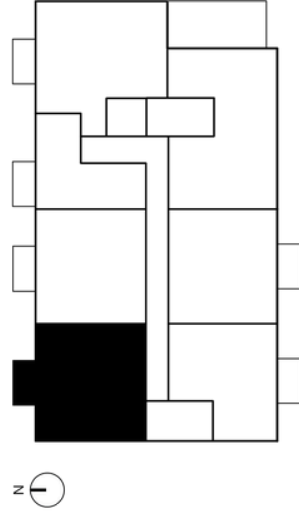
Superficie

1 040 pi²





Plan d'unité - Type 4



Unité(s)

204

304

Chambre(s)

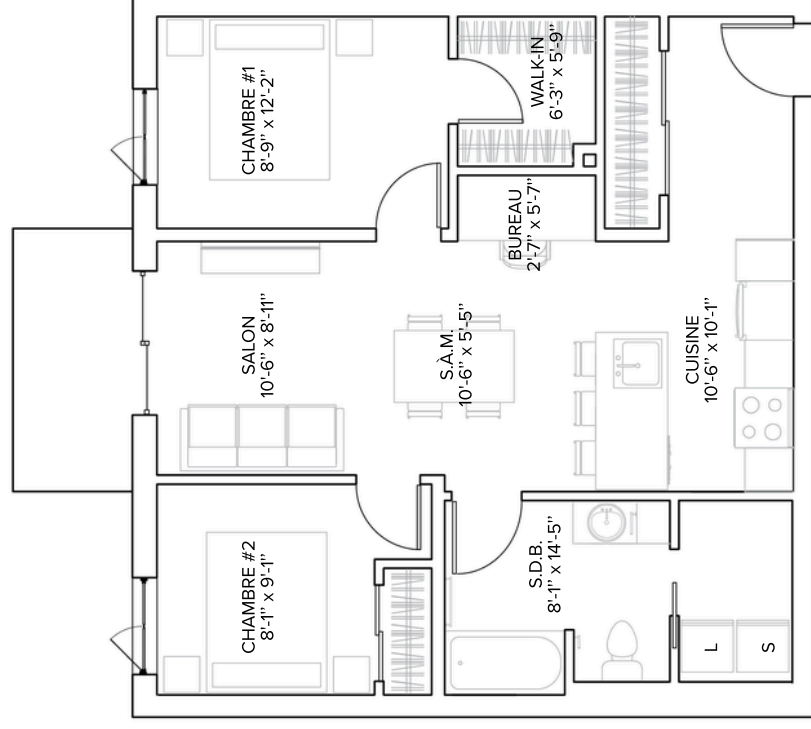
2

Salle(s) de bain

1

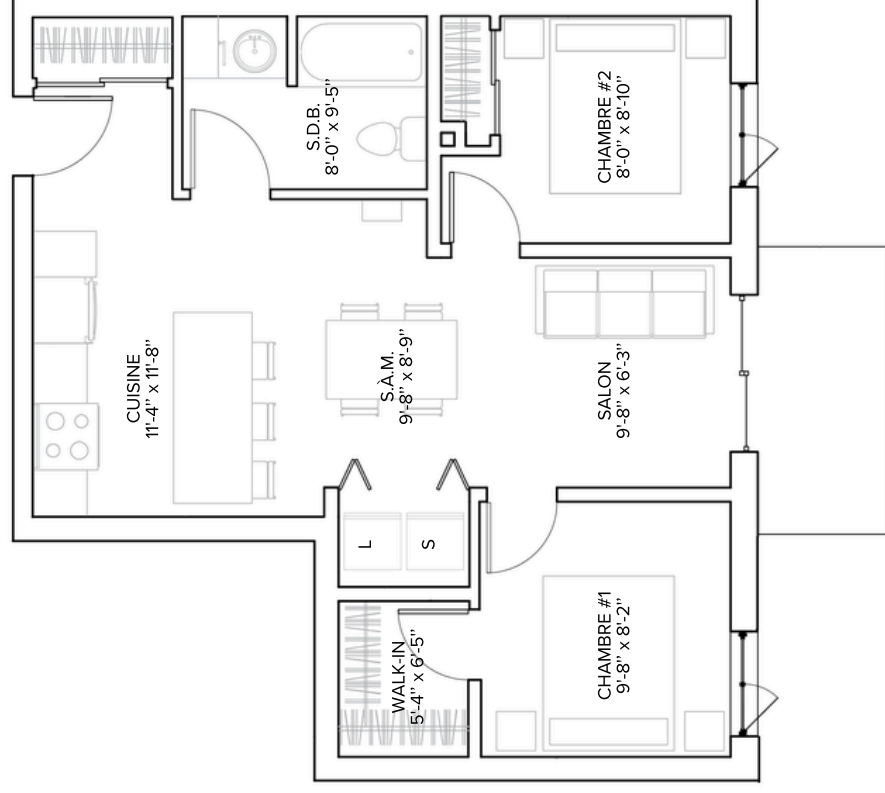
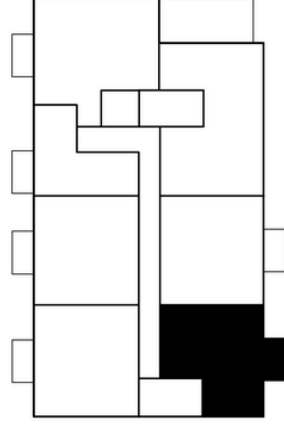
Superficie

785 pi²





Plan d'unité - Type 5



Unité(s)

205

305

Chambre(s)

2

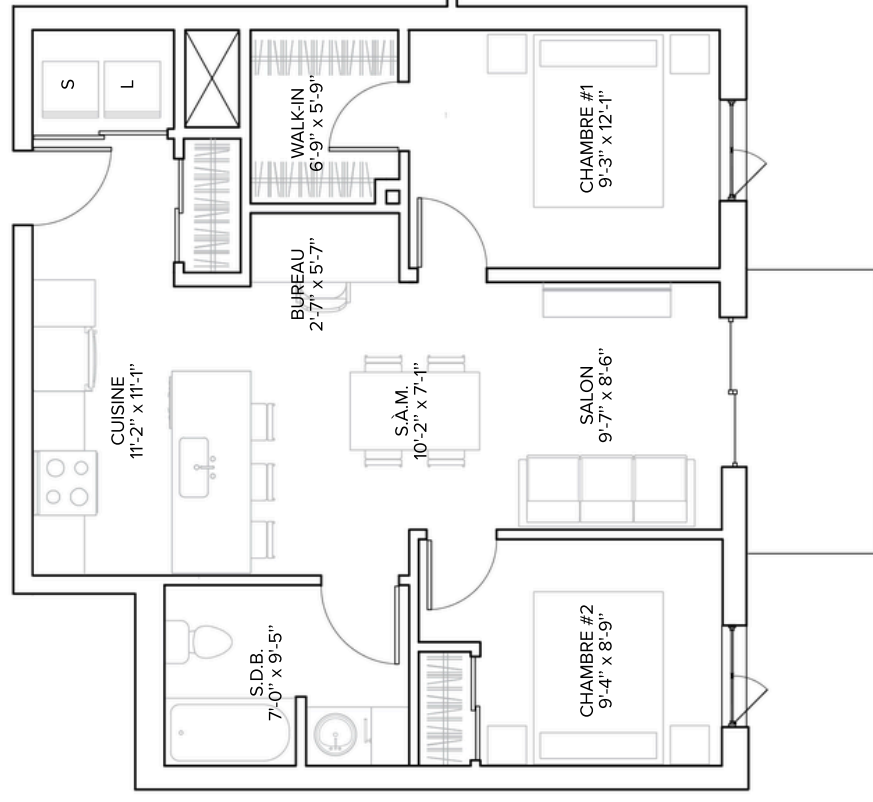
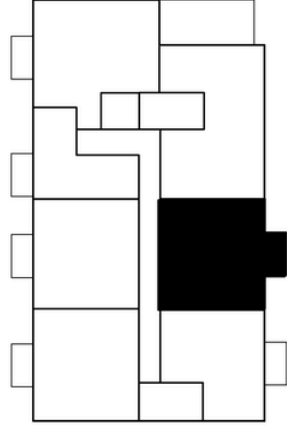
Salle(s) de bain

1

Superficie

785 pi²

Plan d'unité - Type 6



Unité(s)

206

306

Chambre(s)

2

Salle(s) de bain

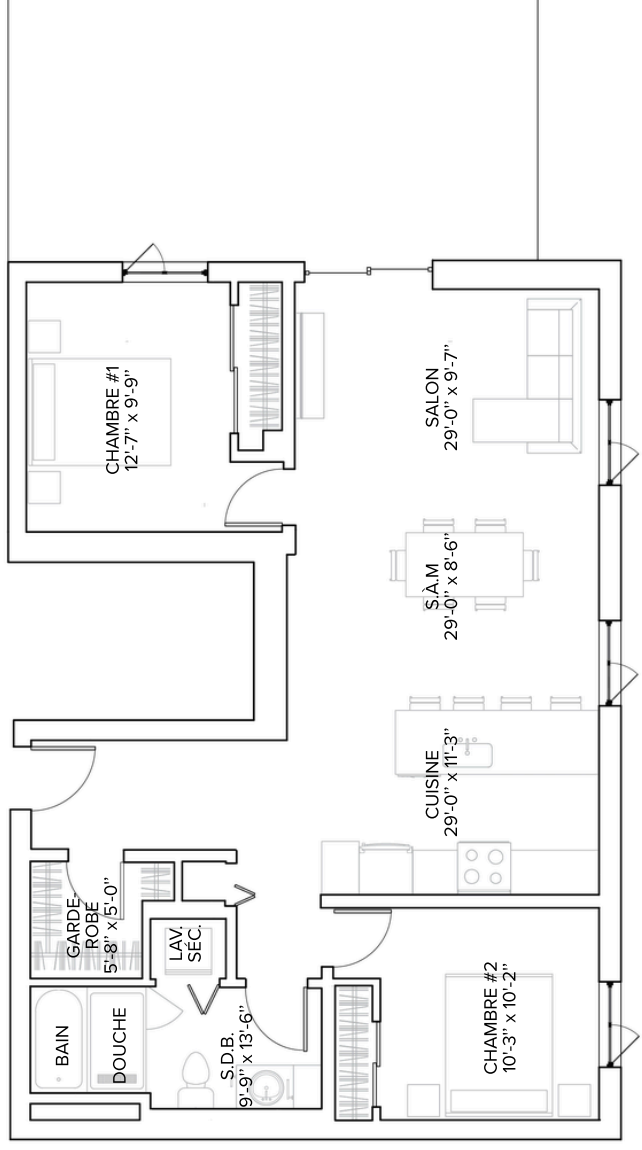
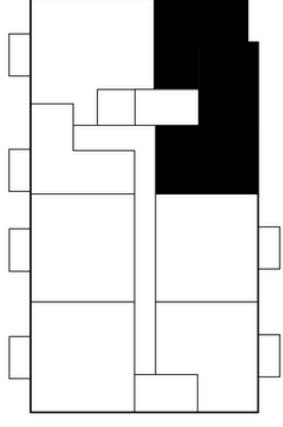
1

Superficie

835 pi²



Plan d'unité - Type 7



Unité(s)

207

307

Chambre(s)

2

Salle(s) de bain

1

Superficie

730 pi²

An aerial architectural rendering of a modern, multi-story residential building with a central courtyard. The building features a mix of white and grey panels, large windows, and balconies with glass railings. The courtyard is landscaped with green trees, shrubs, and two covered outdoor seating areas with tables and chairs. People are shown on the balconies and in the courtyard, giving a sense of scale and life. A white graphic overlay in the upper center contains the text 'CARRÉ 29 OCTOBRE' with a stylized tree logo above the number '29'.

CARRÉ
29
OCTOBRE



Carré 29 Octobre

200 Rue Robert Bernard
Drummondville, QC J2C 8N2